

Real Deals

BROUGHT TO YOU BY ISUZU

OCTOBER / NOVEMBER / DECEMBER 2024



ISUZU GENUINE BULLBAR ASSEMBLY



•PAGE 7

MERITOR® GENUINE TIE ROD ENDS



•PAGE 11

NULON® PRO-STRENGTH BRAKE CLEAN



•PAGE 13

MARVA® EX2 LED DRIVING LIGHT KIT (PAIR)



•PAGE 17

ANCRA® RATCHET TIE-DOWNS



•PAGE 21



Genuine Parts for N-Series

For genuine peace of mind, maintain your Isuzu N-Series Truck by using Isuzu Genuine Parts which are developed and manufactured to stringent quality standards, providing you with maximum productivity, performance, and future re-sale value. All backed by a 12-month unlimited kilometre parts-only warranty, or 3-year unlimited kilometres parts & labour warranty when fitted by an authorised Isuzu Trucks dealer, because reliability is everything!



THERMOSTATS

8982841330	NL*/NN* with 4JJ1 Engine MY2015-Current (82 Degrees)	\$42.70
8973007873	NP*/NQ* with 4HK1 Engine MY2008-Current (85 Degrees)	\$34.75
8973007903	NP*/NQ* with 4HK1 Engine MY2008-Current (82 Degrees)	\$30.05

*Applies to all models in range.



WATER PUMP ASSEMBLY

8980042923	NL*/NN* with 4JJ1 Engine MY2007-Current	\$354.85
8973634780	NP*/NQ* with 4HK1 Engine MY2007-Current	\$385.80

*Applies to all models in range.



COOLANT EXPANSION TANKS

8981781791	NL*/NN*/NP* Single Cab MY2016-Current	\$115.80
8980012401	NN*/NP*/NQ* Crew Cab MY2016-Current	\$100.65

*Applies to all models in range.



RADIATOR HOSES

8973838121	Upper Hose - NL*/NN* with 4JJ1 Engine MY2008-Current	\$33.90
8980064520	Upper Hose - NP*/NQ* with 4HK1 Engine MY2008-Current	\$33.90
8973838141	Lower Hose - NL*/NN* with 4JJ1 Engine MY2008-Current	\$43.45
8980064530	Lower Hose - NP*/NQ* with 4HK1 Engine MY2008-Current	\$52.10

*Applies to all models in range.



RADIATOR GRILLES

8974072913	NL*/NM* MY2015-Current – Painted White (Code 729)	\$383.35
8982410711	NN*/NP*/NQ* MY2015-Current – Chrome	\$361.25

*Applies to all models in range.

HEAVY DUTY LADDER RACKS

92958595	NNR Traypack & NPR Tradepack Model (Rack Width 2122mm)	\$1,613.20
92958596	NLR & NLS Traypack Model (Rack Width 1995mm)	\$1,623.50

TRADEPACK & TRAYPACK 'READY TO WORK' PARTS

To suit NLR/NLS/NNR/NPR Traypack & Tradepack 'Ready to Work' trucks.

PIADQTJ328ISU	Tailgate 1983mm (Wide) x 328mm (Height) NLR/NLS MY2015-Current	\$585.00
PIADQTM328K2	Tailgate 2110mm (Wide) x 328mm (Height) NNR/NPR MY2015-Current	\$599.95
PIAQDLK	Quick Lock Latch Kit MY2015-Current	\$68.40
PIQHSP01	Quick Lock Hinge Set MY2015-Current	\$95.20
PIELP57L	LHS Tail Light Protector MY2015-Current	\$325.90
PIELP57R	RHS Tail Light Protector MY2015-Current	\$325.90
PIMGS015	Mudguard Set MY2019-Current	\$269.85
PITBAS007L	Stirrup LHS MY2015-Current	\$395.65
PITBAS007R	Stirrup RHS MY2015-Current	\$395.65
92957262	Slide Out Step Assembly MY2015-Current	\$376.95



RADIATOR ASSEMBLIES

8982969000	NL*/NM*/NN* with 4JJ1 Engine & Manual Transmission MY2015-Current	\$1,737.35
8982969010	NL*/NM*/NN* with 4JJ1 Engine & AMT Transmission MY2015-Current	\$1,737.35
8983710770	NN*/NP*/NQ* with 4HK1 Engine & Manual Transmission MY2018-Current	\$2,738.80
8983710780	NN*/NP*/NQ* with 4HK1 Engine & AMT Transmission MY2018-Current	\$2,738.80

*Applies to all models in range.

Genuine Parts for F/FX/FY-Series

For genuine peace of mind, maintain your Isuzu F/FX/FY-Series Truck by using Isuzu Genuine Parts which are developed and manufactured to stringent quality standards, providing you with maximum productivity, performance, and future re-sale value. All backed by a 12-month unlimited kilometre parts-only warranty, or 3-year unlimited kilometres parts & labour warranty when fitted by an authorised Isuzu Trucks dealer, because reliability is everything!

A/C CONDENSER

Includes Fan Assembly & Shroud.

8982359112	FR*/FS*/FT*/FV* MY2008-2022	\$588.90
8976569790	FR*/FS*/FT*/FV* MY2022-Current	\$858.05
8981155122	FX*/FY* MY2011-Current	\$1,069.95

*Applies to all models in range.



A/C COMPRESSOR

1835323280	FR*/FS*/FT*/FV* MY2008-Current FX*/FY* MY2011-Current	\$1,425.75
------------	---	------------

*Applies to all models in range.

A/C RECEIVER DRYER

1835350970	All F/FX/FY Series MY2008-2014	\$119.20
8982824820	All F/FX/FY Series MY2015-Current	\$114.70



THERMAL EXPANSION (TX) VALVES

8980473830	All F/FX/FY Series MY2008-2014	\$123.70
------------	--------------------------------	----------

HEATER EVAPORATOR ASSEMBLY

8980741161	All F/FX/FY Series MY2008-Current	\$445.10
------------	-----------------------------------	----------



BRAKE SHOES

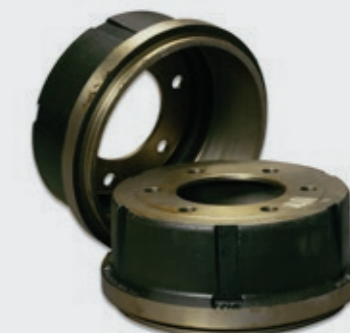
Qty 4 required per Axle.

1471704830	FRR/FRD MY2008-Current – Steer Axle	\$212.00
1471704851	FRR/FRD MY2008-Current – Drive Axle	\$242.40
1471209991	FSR/FSD MY2008-Current – Steer Axle	\$242.15
1471700030	FSR/FSD MY2008-Current – Drive Axle	\$253.45

BRAKE DRUMS

Qty 2 required per Axle.

1423153951	FRR/FRD MY2008-Current – Steer Axle (Brake Size 320 x 120mm)	\$324.75
1423153610	FRR/FRD MY2008-Current – Drive Axle (Brake Size 320 x 145mm)	\$351.80
1423154150	FSR/FSD MY2008-Current – Steer Axle (Brake Size 370 x 150mm)	\$590.85
8980857270	FSR/FSD MY2008-Current – Drive Axle (Brake Size 370 x 150mm)	\$640.10



HEADLIGHT ASSEMBLY

8982413110	FT*/FV*/FX*/FY* MY2008-2021 – Left Hand Side	\$320.60
8982413100	FT*/FV*/FX*/FY* MY2008-2021 – Right Hand Side	\$320.60
8983244892	FT*/FV*/FX*/FY* MY2022-Current – Left Hand Side (LED Main Beam)	\$1,064.45
8983244882	FT*/FV*/FX*/FY* MY2022-Current – Right Hand Side (LED Main Beam)	\$1,064.45

*Applies to all models in range.

TURN SIGNAL ASSEMBLY

8982386310	FT*/FV* MY2008-Current – Left Hand Side	\$265.95
8982386300	FT*/FV* MY2008-Current – Right Hand Side	\$265.95
8982386260	FX*/FY* MY2008-Current – Left Hand Side	\$265.95
8982386250	FX*/FY* MY2008-Current – Right Hand Side	\$265.95

*Applies to all models in range.



Genuine Accessories

Isuzu Genuine Accessories are designed to improve your total driving experience through the enhancement of your truck's practicality and style. All Isuzu Accessories are designed and manufactured to meet Isuzu's rigorous engineering standards.

MYISUZU CO-PILOT MULTIMEDIA UNIT ASSEMBLY

The Mylsuzu Co-Pilot Multimedia system features a 10.1 inch touch screen, Apple CarPlay, Android Auto, and digital/internet stations. Navigate through the menu, or for even greater convenience and safety, use voice-controls for many of the available functions. Hands-free Bluetooth is standard. Contact your Isuzu dealer today about fitting the very latest audio visual technology to your Isuzu Truck.

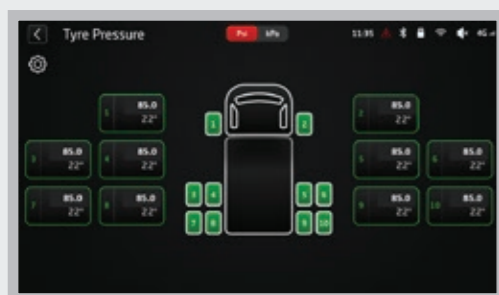


92958463 N/F/FX/FY Series (excluding Dual Control vehicles) **\$1863.90**

*Applies to all models in range.

TYRE PRESSURE MONITORING SYSTEM (TPMS)

The Isuzu Tyre Pressure Monitoring System (TPMS) is fully integrated with the Mylsuzu Co-Pilot Multimedia Unit, unlike aftermarket TPMS products that require a separate display often causing congestion around the instrument panel. Isuzu TPMS provides the operator with tyre pressures across all vehicle axles in both PSI or KpA measurements, and tyre temperatures. Alerting the operator in the event of pressure loss or excessive increases in temperature.*



92958470 6-Sensor Main Kit **\$1097.20**

92958480 2-Sensor Additional Kit **\$210.45**

*Applies to all models in range.

*The tyre pressure monitoring system is a guidance system and not a substitute for manually checking tyre pressures. You should periodically check tyre pressures using a calibrated pressure gauge. Failure to correctly maintain tyre pressures could increase the risk of tyre failure, loss of control, vehicle rollover and personal injury. Use your device in such a way that you can always safely control your vehicle. If in doubt, stop at a suitable location and operate your device while the vehicle is parked. As the driver, you may not use applications that will distract you from driving. NOTE: The values shown in the photo are for illustration purposes only.



DASH MATS

92956233 NL*/NM* MY2008-2020 (Narrow Cab) **\$115.45**

92956234 NN*/NP*/NQ* MY2008-2020 (Wide Cab) **\$115.45**

92958811 NL*/NM* MY2021-Current with ADAS (Narrow Cab) **\$150.00**

92958812 NN*/NP*/NQ* MY2021-Current with ADAS (Wide Cab) **\$150.00**

92956235 FR*/FS* MY2007-Current **\$121.40**

92956236 FT*/FV*/FX*/FY* MY2007-Current **\$121.40**

*Applies to all models in range.



ISUZU GENUINE BULLBAR ASSEMBLY

The manufacturing of the Isuzu Genuine Bullbar assembly employs an advanced process, which includes robotic welding and meticulous macro weld testing, leading to a bullbar that is fully compatible with Isuzu airbags. Tailored specifically for Australian conditions and aesthetically designed to merge flawlessly with truck design. It features an exceptionally strong one-piece pressed bumper along with a replaceable upper structure. Performance is enhanced through computer-aided Finite Element Analysis (FEA). The assembly meets all Australian Design Rules (ADR) and has been crash and vibration tested by Isuzu Motors Limited Japan. Proudly Australian made in Melbourne.

5867619483	NL*/NM* MY2008-Current - Standard	\$3,942.25
5867619493	NL*/NM* MY2008-Current - Tow Pin Type	\$4,036.60
5867619503	NN*/NP*/NQ* MY2008-Current - Standard	\$3,685.70
5867619513	NN*/NP*/NQ* MY2008-Current - Tow Pin Type	\$3,775.40
5867619522	NN*/NP*/NQ* MY2008-Current (with Foglights) - Standard	\$3,718.20
5867619532	NN*/NP*/NQ* MY2008-Current (with Foglights) - Tow Pin Type	\$3,813.30
5867643561	FR*/FSR/FSD MY2022-Current with 4HK1 Engine (with ADAS Radar) - Standard	\$5,009.50
5867643571	FR*/FSR/FSD MY2022-Current with 4HK1 Engine (with ADAS Radar) - Tow Pin Type	\$5,126.00
5867619562	FR*/FSR/FSD MY2008-Current with 6HK1 Engine - Standard	\$4,077.50
5867619572	FR*/FSR/FSD MY2008-Current with 6HK1 Engine - Tow Pin Type	\$4,184.50
5867621681	FTR/FV* MY2008-Current with Factory FUPD - Standard	\$6,860.10
5867621691	FTR/FV* MY2008-Current with Factory FUPD - Tow Pin Type	\$7,156.00
5867621701	FX*/FY*/GX* MY2008-Current with Factory FUPD - Standard	\$7,264.25
5867621711	FX*/FY*/GX* MY2008-Current with Factory FUPD - Tow Pin Type	\$7,430.70

*Applies to all models in range.

HEADLIGHT PROTECTORS

92956090 N-Series & FR*/FS* MY2007-2021 **\$92.40**

92958598 N-Series MY2021-Current with ADAS **\$107.25**

92956379 FT*/FV*/FX*/FY* MY2007-current **\$114.55**

92958265 FT*/FV*/FX*/FY* MY2007-current (Fitted with Isuzu Genuine Bullbar) **\$104.55**

*Applies to all models in range.





Australia

DURALED® BUILT TO LAST

01 GRILAMID® LENS

Toughness against impact.
UV & chemical resistant.
Will not fade or embrittle.

02 FIT & FORGET

Expertly designed and
precision manufactured.

03 RELIABILITY

Continuous improvement
& strenuous testing for an
ultra long operating life.

04 MOUNTING BRUSH

Easy to mount on uneven surfaces.

05 REFLECTOR

Inbuilt retro reflector
beneath the outer lens.

06 LEDs

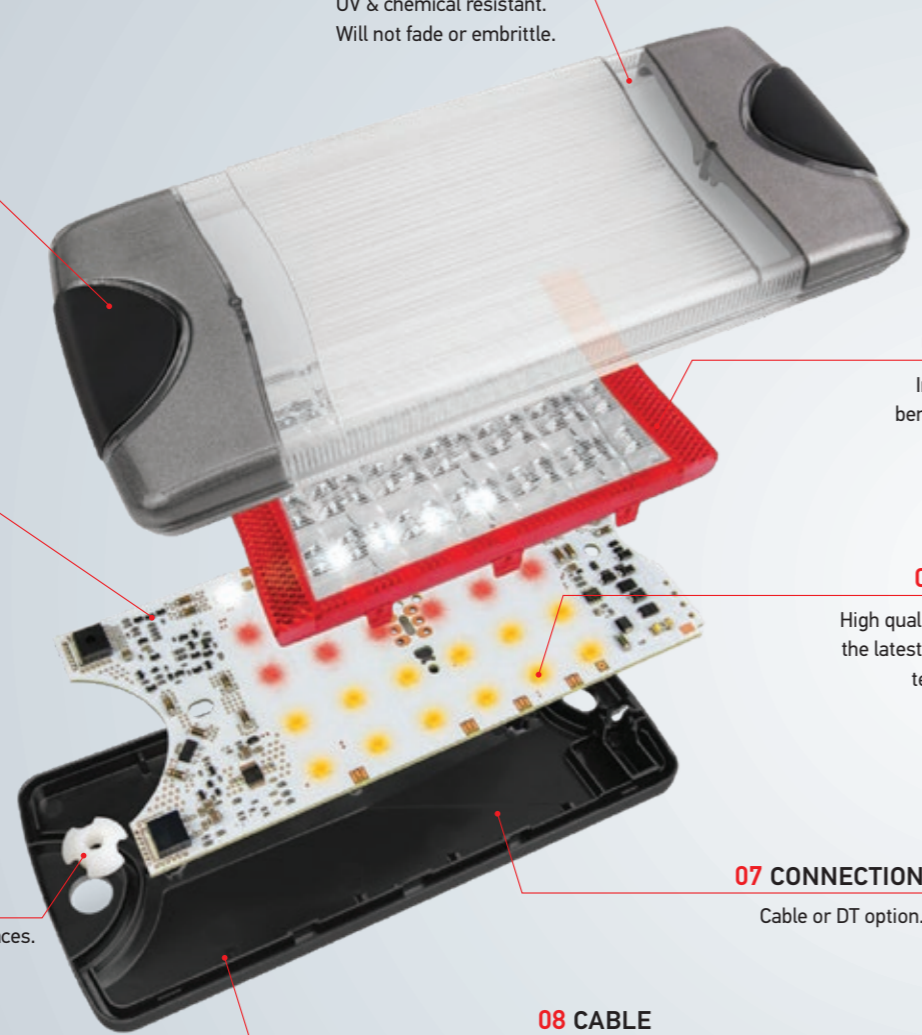
High quality LEDs &
the latest electronic
technology.

07 CONNECTION

Cable or DT option.

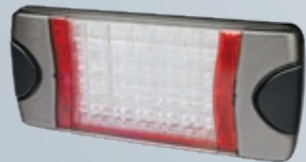
08 CABLE

Glue bath cable entry IP 6K7, IP 6K9K



TAIL LAMPS

DuraLED® Combi-SR incorporates a built-in retro reflector, saving both time and money on installation. The all-in-one design makes the DuraLED® Combi-SR the ideal choice for trucks, utes and vehicles with limited space to mount a separate reflector.



2VP015075001

Duraled combi-SR stop/rear position/rear indicator/
Reverse lamp W/RETRO REFLECTOR with DT

\$167.05

MARKERS

Heavy duty red/amber LED side marker lamp with DT connector and nylon housing. Featuring ultra durable nylon (PA23) lens for extreme impact, UV, chemical and stress resistance. Optic appears clear until illuminated.



2073

DuraLed Heavy Duty Side Marker lamp
Amber/Red W/DT

\$18.45

WORK LAMPS

Effective and efficient mobile lighting can increase productivity and staff safety.



1G0996776001

Worklamp Module 70 Series W/DT 1000 Lumen

\$95.20

1GA996588001

Worklamp Powerbeam S Series W/DT 1000 Lumen

\$100.05

ADR REVERSE LAMPS

Q90 compact LED is the ideal LED reversing Spot Lamp. This reversing lamp is ideally suitable for mounting to the rear of the vehicle so that it can be manoeuvred safely even at night.



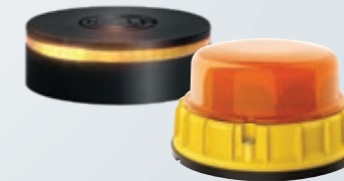
2ZR996284511

Q90 ADR Approved reverse lamp

\$127.95

BEACONS

HELLA's signal warning lamps provide high levels of performance and reliability for situations where a powerful warning light is required to attract attention.



2RL455256001

LED Beacon rotating amber

\$240.05

2XD011557001

Beacon Lamp MD12/24 Amber Fixed MT

\$403.05

FORWARD LIGHTING

The unmistakable black design of these lightbars, down to the last screw, combines good looks and excellent operation. Boasting the highest dust and water resistance class, they are totally robust and have a particularly long lifetime – ideal for the unique Australian conditions.



1FJ358196451

Lightbar Double Row Mini 7" ECE

\$137.95

1FJ358196461

Lightbar Double Row Mini 13" ECE

\$194.85

1GJ358197401

Lightbar Double Row 21.5"

\$285.70

NUMBER PLATE LAMPS

White LED licence plate lamp. Bulk version includes 20mm mounting spacer. One lamp required for ADR compliance.



2559-1

LED Number Plate Lamp with Spacer Bulk
< Note 1 required side mount for ADR compliance >

\$35.20

Qantas Business Rewards Trade Mate

Thanks to our partnership with Qantas Business Rewards, your business can earn Qantas Points as an Isuzu Trade Mate*. When you become an Isuzu Trade Mate member your business will earn 1 Qantas Point for every dollar you spend on eligible Isuzu Truck parts or accessories purchased from participating authorised Isuzu Dealers.

Apply now to earn Qantas Points for your business*.

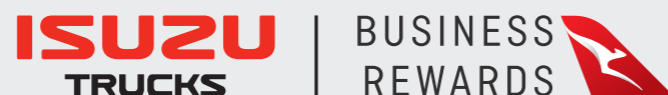
Terms and Conditions apply.



To find out more scan the code or visit parts.isuzu.com.au/isuzu-trade-program

Reward your business for purchasing Isuzu Truck parts and accessories..

Your business can use Qantas Points earned on a range of rewards including booking flights, upgrades and more. Or you can transfer your business's Qantas Points to any Qantas Frequent Flyer account to use on car hire, hotels, wine or choose from over 20,000 products at the Qantas Marketplace*.



MERITOR.

MERITOR® GENUINE UNI-JOINTS

M279X	1610 Series – Full Round	\$73.00
M280X	1710 Series – Full Round	\$82.55
M281X	1810 Series – Full Round	\$96.25
M674X	1610 Series – Half Round	\$128.25
M675X	1710 Series – Half Round	\$92.20
M676X	1810 Series – Half Round	\$96.25



MERITOR® GENUINE CENTRE BEARINGS

CB2101211XSA	1710 Series - Slotted Cushion (Spicer 210121-1X)	\$66.75
CB2106611XSA	1710 / 1760 / 1810 Series - Slotted Cushion (Spicer 5003323)	\$63.95
CB2108751XSA	1810 Series - Solid Cushion (Spicer 5003326)	\$79.60



MERITOR® GENUINE KING PIN KITS FOR FG941 AXLE

R201310	Bronze Ream Bushing (Traditional)	\$309.95
R201309	Ezi-Steer Composite Ream Bushing	\$306.75
R203010	Readyset™ No-Rear Bi-Metal Bushing	\$418.60
R202010	Fastset™ No-Rear Stainless Steel Spiral Bushing (Heavy Duty)	\$709.45



MERITOR® GENUINE TIE ROD ENDS

R230068	Meritor FG941/MFS66 – Left Hand Thread	\$59.00
R230069	Meritor FG941/MFS66 – Right Hand Thread	\$59.00
R230072	Meritor MFS73/FL941 – Left Hand Thread	\$75.00
R230073	Meritor MFS73/FL941 – Right Hand Thread	\$75.00

MERITOR® INPUT & OUTPUT SHAFT SEALS

Multiple-Lip Seal (MLS) type to suit 145/160 Series Carriers.

A11205X2728	Input Shaft – Forward Carrier	\$100.55
A11205Y2729	Output Shaft – Forward Carrier	\$100.55
A11205Z2730	Input Shaft – Rearward Carrier (145 Series)	\$106.85
A11205A2731	Input Shaft – Rearward Carrier (160 Series)	\$106.85



MERITOR® GENUINE AUTOMATIC SLACK ADJUSTERS

R801079	Steer Axle – 1.5" X 28 Spline 5.5" Length (Chambers Size 20)	\$204.20
R801073	Drive Axle – 1.5" X 28 Spline 5.5" Length (Chamber Size 30)	\$267.15



MERITOR® COILED AIR HOSES

E10744	15ft Coiled Air Hose - Short Tail	\$78.25
E10746	15ft Coiled Air Hose - Long Tail	\$85.10

Tech Talent Living Life in the Fast Lane

Top quality capital equipment is engineered to stay 'on the job' and working for many years without issue, provided due attention is given to its care with appropriate servicing and maintenance.

As the market-leading original equipment manufacturer (OEM) in the heavy vehicle space, Isuzu Australia Limited (IAL) recognises the importance of supporting truck owners in this endeavour, with an exceptional aftersales support and care system designed to back both product and customer, and delivered through its highly experienced dealer network.

Isuzu's ambition to create an industry-leading service environment starts with its people and extends to nurturing talent across the national network, including dynamic opportunities for staff to elevate their potential.

An enhanced training program for service technicians working at Isuzu Trucks dealerships around the country encompasses a range of hands-on opportunities, including a once-in-a-lifetime experience involving the Repco Supercars Championship.

In 2024, Isuzu's Supercars experience for technicians is up and running with the help of PremiAir Nulon Racing, who's on-track performance is providing inspiration for established and apprentice technicians alike.

Techs Rewarded

This year a total of 16 Isuzu technicians are joining the PremiAir Nulon Racing team at events during the 2024 Repco Supercars Championship calendar and at the team's headquarters situated in the Gold Coast, Queensland.

Discussing the high-octane experience, IAL's Head of Aftersales Brett Stewart explained the ethos behind the annual program.

"At the end of the day, we're the number one truck seller in Australia and we want to be leading the pack not only with fantastic products, but also in aftersales, where our technicians form an integral part of the team," said Mr Stewart.

"With almost 100,000 Isuzu trucks in operation on the roads over the last 10 years, the need to attract and retain talented technicians into our industry has never been greater.

"The goal of these training programs is to foster some of the best talent for our dealer network—and see all the benefits of this type of hands-on learning flow-through to support our customers."

High Stakes Service

Those chosen to participate in the experience were elected via a nomination process for showing a high level of dedication and support to their Isuzu dealership and customers.

The 16 technicians will assist PremiAir Nulon pit crew with general operations, while being fully immersed in the high stakes environment of running repairs and service on race cars against the clock.

For hosts PremiAir Nulon Racing, having an extra set of hands and some added enthusiasm is a welcome addition, according to Chief Mechanic, Andrew Bell.

"It's a great opportunity to gain hands on experience, ask plenty of questions, and get full exposure to what's involved in the operation of a Supercars team," said Mr Bell.

"Some of the technicians we have hosted have converted the experience to a full-time position within the industry, but this is more about generating enthusiasm to continue their work in what is a critical aspect of the heavy vehicle sector."

Thrills for Skills

PremiAir Racing has hosted two technicians at race events this year already—in Darwin, Townsville and Sydney—plus two technicians at the team workshop following those rounds.

Technician Zac Spalding from Blacklocks Isuzu in Wodonga said he was thrilled with the chance to learn the ropes.

"Just the speed and everyone knowing what to do throughout the weekend was really exciting to be a part of," Zac commented.

"The team works quickly, but precisely, and there is constant communication between everyone to ensure that things run smoothly."

Likewise, apprentice technician Rochelle Magnussen from Brisbane Isuzu Stapylton was geared up for the experience, noting that preparation was a key lesson learned for keeping the race team ticking.

"The biggest thing I took away from the opportunity was how planning makes everything far more straight forward," Rochelle said.

"I can definitely apply things I got to experience, maybe not at the same pace as at the racetrack, but certainly to improve how I approach my workday back at the dealership."

Hot Incentives

As an extra bonus, the best nomination from each of the two categories in the program (technician and apprentice) received the reward of a hot lap inside one of PremiAir Nulon's GM Camaros at a dedicated ride day in Sydney.

The two coveted places have been awarded to Isuzu Trucks technicians Keaton Ratcliff of Major Motors (Forrestfield) and apprentice Joel Allen from Brisbane Isuzu (Burpengary).

The Supercars program is part of a range of incentives available to Isuzu Trucks technicians, with another key event being Isuzu's National Technical Skills Competition, which brings the best from across the country to compete at Isuzu's Training Centre in Melbourne.

Winners from the 2023 competition, Jason Lee from Road Runner Mechanical Services (Geraldton) and Connor Gillam from Major Motors—both hailing from Western Australia—will represent Australia later this year in Japan at the I-1 Grand Prix World Final, competing against world-class technicians from across Isuzu's global operation.

For more information on careers at Isuzu Trucks visit [isuzu.com.au/work-with-us](https://www.isuzu.com.au/work-with-us).

NULON

NULON® PRO-STRENGTH BRAKE CLEAN

Specifically formulated to quickly and aggressively dissolve and dislodge all contaminants common to brake components. Even encrusted residue that has accumulated over a long period of use is readily dissolved and flushed away, leaving surfaces clean, dry and ready for further work.



BRAKE400 400mL Aerosol **\$11.00**

NULON® HEAVY DUTY MULTI-PURPOSE DEGREASER

Concentrated, solvent-based spray-on and hose-off degreaser formulated to dissolve baked-on oil, dirt, dust and grime, leaving a revitalised surface.



HDED400 400mL Aerosol **\$6.20**

NULON® MULTI-PURPOSE LANOLIN LUBRICANT

Natural, waterproof grease designed to preserve and protect a wide range of surfaces, as well as providing anti-seize properties. It is recommended for general purpose use in automotive, commercial, construction, earthmoving, farming, industrial, mining and transport applications where instant and long lasting protection is required.



MPLL300 300g Aerosol **\$11.20**

NULON® ELECTRICAL CONTACT CLEANER

Fast-acting residue-free formulation ideal for removing light oils, dirt, dust particles, flux residue and condensation from sensitive electrical components and equipment.



ECC400 400mL Aerosol **\$12.25**

NULON® SHIFT YA BASTARD MULTI-PURPOSE LUBE SPRAY

Penetrates fast to help loosen rusted or corroded nuts and bolts, and helps prevent equipment from seizing due to rust or heat. Use anywhere a light and long lasting lubricating film is required. It makes assembly and disassembly of parts easier and stops annoying squeaks and squeals. Helps start wet motors fast – dispersing moisture (water) from distributor caps and spark plug leads. Ideal for all electrical and ignition systems, starter motors, spark plugs and switches. Use it after degreasing engines to protect electrical connectors from corrosion. Prevents rust by impregnating corrosion inhibitors into all metal surfaces. Softens and helps clean away road tar and splattered bugs from paintwork. It dissolves and helps remove oil, grease, sticker adhesive.



SHIFT150 150g Aerosol **\$5.70**

SHIFT550 400g Aerosol **\$8.05**

NULON



ISUZU SERVICE AGREEMENTS

Zero-stress servicing. Brought to you by Isuzu.

No business wants big, unexpected bills. But with an Isuzu service agreement, you can flatten your truck servicing costs into a predictable monthly payment (or upfront fee with Isuzu Essentials). You'll also be part of one of Australia's biggest dealer networks, so you can book a service at locations around the country. With the new Chain of Responsibility laws, proper servicing will protect your business. Lastly, service agreements come with Isuzu Care, Australia's most comprehensive truck customer care programme.

To find out more, see your nearest dealer or visit isuzu.com.au/care-support/service-agreements.



Ask your local Isuzu dealer about which service agreement is right for you.

- Isuzu Essentials
- Isuzu Essentials Plus
- Isuzu Total
- Isuzu Heritage

DEALER NETWORK

Isuzu has Australia's biggest dealer network. If you book into any Isuzu Service Centre nationwide, they'll have access to your truck's comprehensive service history



ISUZU CARE

Australia's most comprehensive truck customer care programme, Isuzu Care has a team of service specialists to ensure that owning your Isuzu is a great experience. To contact them, just freecall 1800 035 640.



STREAMLINED PROCESS

Maintaining your trucks under a Priority Service Agreement is quick and easy. With prearranged payments, you won't have to worry about the hassle of arranging finances before your drivers drop off and pick up trucks on the day of the service.



CHAIN OF RESPONSIBILITY & NHVR

With a Priority Service Agreement, you're clearly demonstrating that you've pre-planned your fleet maintenance and have put established procedures in place. That means establishing NHVR (National Heavy Vehicle Regulator) fleet maintenance requirements couldn't be easier.

ONLY THE BEST SERVICE AND PARTS

Using a combination of the latest diagnostic software and Isuzu-approved parts, our qualified Isuzu technicians will keep your truck in tip-top condition.



REDUCE TOTAL COST OF OWNERSHIP

Better servicing helps reduce unforeseen overheads and results in more reliable, fuel-efficient trucks. And that means less downtime and lower total cost of ownership.



FACTORY TRAINED TECHNICIANS

Why would you trust your Isuzu to anyone but an Isuzu-trained technician? With meticulous training tailored specifically to Isuzu trucks, our team carries out servicing and repairs to manufacturer-documented standards (and that means the highest level possible!).



RESALE VALUE

Thanks to the comprehensive service history you receive from Isuzu, you'll always get the best price for your truck when the time comes for an upgrade.

Genuine Filtration & Lubricants

GENUINE SERVICE FILTER KITS

Included are oil filters, fuel filter/s, sump plug washer, sediment filters and PCV filters (where applicable).

92958223	NL*/NM*/NN* with 4JJ1 Engine MY2008-Current	\$136.55
92958224	NP*/NQ* with 4HK1 Engine MY2008-Current	\$164.20
92958225	FR*/FS* with 4HK1 Engine MY2016-Current	\$208.80
92958226	FR*/FS*/FT*/FV* with 6HK1 Engine MY2016-Current	\$189.40
92958227	FX*/FY* with 6UZ1 Engine MY2016-Current	\$306.10

*Applies to all models in range.



ISUZU NEXTGEN PLUS 10W-40 CK-4 E8/E11 ENGINE OIL

Premium Engine Oil that adheres to the latest E8/E11 ACEA specification and approval process. Using a carefully chosen base stock formulation and premium additives that meet the demands of Euro 5 & 6 engine requirements, it has been engineered to reduce oxidation and assist with piston cleanliness, decreasing soot and carbon build-up. Recommended for use in Isuzu Trucks and has wider appeal across a range of other commercial vehicles including those with Exhaust Gas Recirculation (EGR), Diesel Oxidation Catalyst (DOC) systems and Diesel Particulate Filter (DPF) exhaust after-treatment systems, making it a staple for any automotive workshop.

92958803	5 Litre Bottle	\$50.30
92958804	20 Litre Drum	\$187.15
92958805	205 Litre Drum	\$1,733.85
92958806	1000 Litre IBC	\$7,745.45



ISUZU LONG LIFE ANTIFREEZE PREMIXED COOLANT

Premixed SI-OAT formulation based on Mono Ethylene Glycol, free of amines, nitrates and phosphates and provides superior aluminium protection for radiator components. Green in colour.

92957732	5 Litre Bottle	\$30.60
92957733	20 Litre Drum	\$118.55
92957734	205 Litre Drum	\$984.50



ISUZU DIESEL INJECTOR CLEANER ADDITIVE

A high performance diesel fuel injector cleaner designed for use in passenger car and truck engines. Suitable for all diesel-powered vehicles including latest generation common rail diesel and bio-diesel blends.

92958716	300mL Bottle	\$9.85
92958717	1 Litre Bottle	\$26.20



ISUZU TRANS 85W-140 DIFFERENTIAL OIL

High-quality mineral automotive gear oil formulated with advanced extreme pressure additives and limited slip features that comply with API GL-5 standards for Meritor differential carriers. It delivers superior protection against wear and corrosion, even under conditions of high speed, torque, and horsepower. The oil includes cutting-edge additives to guarantee excellent wear protection and extended component longevity.

92956070	5 Litre Bottle	\$45.50
92956071	20 Litre Drum	\$166.60
92956473	205 Litre Drum	\$1,548.90



Narva Lighting & Electrical

NARVA[®] RECHARGEABLE LED HEAD LAMP

Featuring a unique detachable lamp with integrated magnet for increased user applications, the 71426 is incredibly versatile. The head lamp allows selection between a powerful spot beam with 60 metre beam pattern or 120 degree flood light. There is also an option to combine the spot or flood beam with an arc shaped flood beam for even more powerful lighting.

71426 250 Lumen Detachable & Rechargeable Sensor ALS **\$90.65**



NARVA[®] METAL TRAILER PLUGS & SOCKETS

82161BL 7-Pin Large Round Plug **\$11.50**
82062BL 7-Pin Large Round Socket **\$13.20**



NARVA[®] ELECTRICAL SUZI COILS

82529 7 Core 4.6m – Short/Long Tail with Heavy-Duty Plug **\$179.50**
82536 7 Core 4.6m – Short/Long Tail **\$140.60**
82560 7 Core 4.5m – Short/Short Tail for EBS (12/24 Volt) **\$219.85**



NARVA[®] MODEL 42 LED REAR COMBINATION LAMP

A fresh, modern, low profile design with polycarbonate lenses, built in retro-reflectors, stainless steel fittings and 0.5m of hard-wired cable.

94210 Indicator/Stop/Tail/Reverse (9-33 Volt) **\$140.60**

NARVA[®] LED WORK LAMP – SPREAD BEAM

Ultra compact design utilises a powerful 5W L.E.D to deliver an intense output of bright white light. Fully sealed (IP66) with a pre-wired die-cast powder coated aluminium housing.

72429 500 Lumen (10-80 Volt) **\$68.30**



NARVA[®] CABLE TIES – 100 PACK

UL approved nylon tie, with a UL94V-2 flammability rating and meets or exceeds tensile strength MIL-S 23190E with an operating temperature of -40°C to 85°C.

56402 3.6mm X 140mm (5.5") **\$4.30**
56404 4.8mm X 200mm (8") **\$7.15**
56406 4.8mm X 300mm (12") **\$13.30**
56408 4.8mm X 370mm (14.5") **\$15.75**
56410 7.6mm X 370mm (14.5") **\$31.50**

NARVA[®] EX2 LED DRIVING LIGHT KIT (PAIR)

The EX2 range combines Narva's legendary performance and reliability, with the added benefit of easy installation and user customisation, to make a truly unique range. The range includes all sizes in single packs, as well as retail friendly kits for the 6", 7" and 9" driving lights. All products in the range feature a hard coated polycarbonate lens for durability and long life. IP68 & IP69K rated against water and dust. EX2 models come with stealth black lens protectors.

CLEVER HARNESS-FREE INSTALLATION

EX2 eliminates the need for a harness, making it the easiest to wire on the market, with no components needing to be routed through the firewall.

NYLON COMPOSITE MOUNTING BRACKETS

Lightweight yet strong composite glass-filled nylon brackets offer increased vibration resistance and eliminate the risk of corrosion or rust.

EXCEPTIONAL PERFORMANCE

EX2's hybrid beam provides outstanding width and distance, without dark spots or hot spots, ensuring exceptional clarity in the dark. 1 lux is available at 700m.

8 INTERCHANGEABLE COLOUR TRIMS

EX2 allows for a custom look with 8 interchangeable trims! Slate (Grey), Stealth (Black), Sunburst (Yellow), Volcano (Red), Electric (Blue), Hyper (Green), Juiced (Orange), and Bubblegum (Pink).

7 YEAR WARRANTY

Ensured durability with a 'No Fault' 7 year warranty.

72162 6" KIT (PAIR) **\$386.50**
72172 7" KIT (PAIR) **\$419.10**
72182 9" KIT (PAIR) **\$512.25**



NARVA[®] 7" LED HEADLAMP INSERT

Available in High only and High/Low Beam, these LED Headlamp inserts with Daytime Running Lights (DRL) & Position Light provide intense white light performance from the latest LED technology - ideal for trucks, off-road vehicles, classic cars & motorcycles. 5-year LED Warranty.

72104 High/Low Beam, DRL & Position Light **\$490.00**
72106 High Beam, DRL & Position Light **\$490.00**



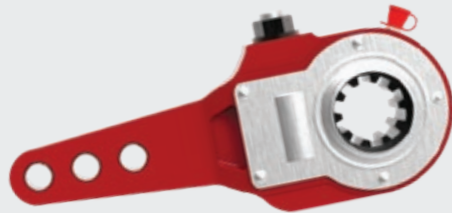
MERITOR® RED SPRING BRAKE CHAMBERS

MBC2424	Size 24/24 2.5" Stroke – Standard	\$78.30
MBC2430	Size 24/30 2.5" Stroke – Standard	\$56.50
MBC3030	Size 30/30 2.5" Stroke – Standard	\$56.50
MBC3636	Size 36/36 2.5" Stroke – Standard	\$120.90



MERITOR® RED SLACK ADJUSTERS

MMSA5020	5'6"/7" Straight 1-1/2"-10 Spline	\$26.65
MMSA5023	5.5'/6.5" Straight 1-1/2"-10 Spline	\$26.65
MMSA5024	5.5'/6.5" Straight 1-1/2"-28 Spline	\$26.65
MMSA5025	5'6"/7" Straight 1-1/2"-28 Spline	\$26.65



MERITOR® RED BRAKE S-CAMS

To suit Q-Plus 1.5" x 28 Spline brake applications.

MCS7536	Drive Axle – 11-9/16" Length RHS (Meritor 2210V7536)	\$43.20
MCS7537	Drive Axle – 11-9/16" Length LHS (Meritor 2210W7537)	\$43.20
MCS7452	Steer Axle – 9-5/16" Length RHS (Meritor 2210P7452)	\$49.50
MCS7453	Steer Axle – 9-5/16" Length LHS (Meritor 2210Q7453)	\$49.50
MCS7670	Drive Axle – 15-3/16" Length RHS (Meritor 2210Z7670)	\$49.50
MCS7671	Drive Axle – 15-3/16" Length LHS (Meritor 2210A7671)	\$49.50



MERITOR® MG2A BRAKE SHOE KIT

Kit includes two (2) lined shoes & hardware for one (1) wheel end.
Gross Axle Weight Rating (GAWR) of 10.5t (23,000lb).

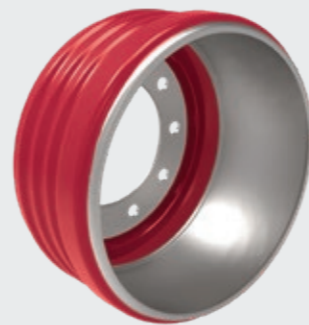
BVPMG2A4720QP	Steer Axle 16.5" x 5" Q-Plus	\$113.95
BVPMG2A4707QP	Drive Axle 16.5" x 7" Q-Plus	\$101.90



MERITOR® RED BRAKE DRUMS

Meritor® Red Brake Drum family built to suit steer, drive and trailer axles with a brake size of 16.5" x 5", 7", 8.62" (285mm PCD, 10 stud). Through innovative engineering and manufacturing with strength front of mind, performance of these new single-piece steel shell drums has been optimised; eliminating weld on balance weights and achieving a 20% weight reduction in comparison to standard cast drums.

MBD103L	Steer Axle 16.5" x 5" 10 Stud 285mm PCD 9.21" depth	\$240.90
MBD136L	Steer Axle 16.5" x 5" 10 Stud 285mm PCD 8.89" depth	\$242.65
MBD190L	Drive & Trailer Axle 16.5" x 7" 10 Stud 285mm PCD (General Purpose)	\$186.10



MERITOR® RED DISC BRAKE CHAMBERS

To suit BPW Trailer Axle applications.

MBC1624L	Size 16/24 2.25" Stroke – Left (BPW 0544440010)	\$80.75
MBC1624R	Size 16/24 2.25" Stroke – Right (BPW 0544440020)	\$80.75



Fuel Filter
FF5507



Air Cleaner Inner
AF26212



Power Steering Filter
LF595



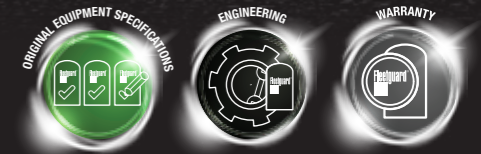
Coolant Filter
WF2108



Urea Filter
UF101

**ENHANCING PERFORMANCE UNDER ANY CONDITION.
GO FURTHER WITH THE PROTECTION OF FILTRATION SCIENCE.**

Fleetguard offers a full line of filters specifically engineered for a wide range of Volvo engines. With advanced design and high quality performance, Fleetguard filters give you the ultimate protection for all your equipment.



FLEETGUARD® SERVICE FILTERS FOR VOLVO FH16		
MK14224^	Service Filter Kit (Includes: LF3973 x2, LF3654 x1, FF5507 x1, FS19966 x1)	\$135.00
LF3973^	Lube Filter	\$19.45
LF3654^	Lube Filter	\$25.60
FS19966^	Fuel/Water Separator Element	\$51.25
FF5507^	Fuel Filter	\$26.80
AF26472M	Air Filter Element - Primary	\$160.40
AF26212	Air Filter Element - Secondary	\$205.40
LF595	Power Steering Filter	\$19.85
UF101	Urea Filter (Ad-Blue)	\$83.20
WF2108	Coolant Filter	\$15.60

^ = Included in Kit MK14224



**Right products.
Trusted advice.**



fleetguard.com

All Makes

FLEETGUARD® PG PLATINUM HEAVY DUTY COOLANT

PG Platinum™ is a propylene glycol based premixed coolant which uses organic additive technology (OAT) to provide long lasting protection against corrosion and liner pitting (cavitation) and is compatible with the different elastomeric seals, gaskets, plastics and metal alloys used by OEM heavy duty engine manufacturers.

CC36082	4 Litre	\$26.05
CC36083	10 Litre	\$64.60
CC36084	20 Litre	\$127.85
CC36085	208 Litre	\$1,147.80



SKF® SCOTSEAL WHEEL SEALS

35058	Steer Axle – Scotseal PlusXL	\$37.90
35066	Steer Axle – Scotseal Classic	\$27.35
47691XT	Drive Axle – Scotseal X-Treme	\$66.40
47693	Drive Axle – Scotseal Long Life	\$33.25
47697	Drive Axle – Scotseal Classic	\$31.40



SKF® BRAKEMASTER TURBO-2000 AIR DRYER

620300	To suit 12 Volt System	\$756.15
--------	------------------------	----------



EATON® PS-386 SYNTHETIC TRANSMISSION LUBRICANT & GENUINE FILTERS

Eaton's PS-386 Synthetic transmission lubricant is designed for fuel efficiency, extended drain intervals, and severe service in heavy-duty commercial vehicle transmissions which require a non-EP transmission lubricant. It is specially formulated to protect higher torque transmissions coupled with increased horsepower engines. It is approved for use in Eaton and Eaton Cummins manual and automated transmissions such as Endurant HD, Endurant XD, UltraShift PLUS, Fuller Advantage, FR, and RT Series.

5564543	20 Litre Drum	\$541.50
4304827	Oil Filter Element	\$40.05
17237	Oil Filter Element (Chassis-mounted)	\$38.20



EATON ULTRASHIFT® ECA CLUTCH KITS

Ensure performance and efficiency with the Electric Clutch Actuation (ECA) and intelligent shift selection software by replacing with genuine Eaton UltraShift® Clutch Kits. Enables better launch and shift decisions through grade sensing, weight computation and driver throttle commands. Provides smooth engagement and high fidelity of vehicle control, even in the most challenging applications. Designed for fast actuation to enable quick, open clutch shifting. Comes standard with a new inertia brake.

122002-35A	Heavy-Duty Clutch - Torque 1850 lb-ft	\$3,945.70
122003-42A	Heavy-Duty Clutch - Torque 2250 lb-ft	\$4,515.85
K-4145CL	Clutch Installation Kit	\$1,135.65
K-4252RX	Electric Clutch Actuator (GEN 2)	\$1,651.05



ANCRA® SQUAT BOTTLE JACKS

ANC012	Squat Bottle Jack with Handle - 12 Tonne	\$80.35
ANC020	Squat Bottle Jack with Handle - 20 Tonne	\$116.30



ANCRA® RATCHET TIE-DOWNS

50000-12	50mm x 9m Ratchet Tie Down Strap	\$18.55
50000-12-11MTR	50mm x 11m Ratchet Tie-Down Strap	\$25.25

WATTS DUST BLOWER GUN

BG12	Extendable 5.25m Hose	\$28.45
------	-----------------------	---------



WATTS WHEELS CHROME HUBCAPS & NUTCOVERS

7103	8" Hubcap	\$9.30
8074BP	33mm Nut Cover - Pack of 10	\$12.35



TIMKEN® WHEEL BEARING SETS

SET406	Steer Axle – Outer Bearing Set (3782/3720)	\$36.65
SET413	Steer Axle – Inner Bearing Set (HM212049/HM212011)	\$53.05
SET401	Drive Axle – Outer Bearing Set (580/572)	\$65.45
SET403	Drive Axle – Inner Bearing Set (594A/592A)	\$77.85



STEMCO® ALUMINIUM HUB CAPS

343-4009	Trailer Axle 5-1/2" Bolt Circle (SKF 1644)	\$33.60
343-4024	Steer Axle 4-1/2" Bolt Circle (SKF 1612)	\$68.15
343-4046	Steer Axle 5-1/2" Bolt Circle (SKF 1643)	\$67.00
359-5995	Window Kit	\$13.95



BENDIX® SR-2 TRAILER SPRING BRAKE VALVE

K033128	SR-2 Trailer Spring Brake Valve	\$191.40
---------	---------------------------------	----------



BENDIX® R-12 TRAILER RELAY VALVE

102277	R-12 Trailer Relay Valve	\$96.15
--------	--------------------------	---------



Best Value Parts (BVP)

Isuzu Best Value Parts (BVP) portfolio offers a comprehensive range of parts to suit older model Isuzu Trucks, all manufactured to high standards and backed by a 12-month, unlimited kilometre warranty. The BVP range is available exclusively through our 74 Service & Parts locations Australia-wide.

ENGINE OIL FILTERS

1876100641	F-Series with 6HE1/6HH1/6HK1 Engines	\$43.50
5876101170	N-Series with 4HF1/4HG1/4HK1 Engines	\$31.70
5876101180	N-Series with 4JJ1 Engine	\$18.00



WATER PUMP ASSEMBLY

5876100891	FR*/FS*/FT*/NP*/NQ* with 4HK1 Engine MY2008-Current	\$118.30
5876100882	NKR with 4JH1-TC Engine MY2003-2006	\$106.10
5876100930	NP*/NQ* with 4HE1/4HF1 Engines MY2000-2007	\$112.05



COOLING FAN & AIR-CON BELTS

1876102380	Fan Belt – FR*/FS*/FT*/FV* with 6HK1 Engine MY2008-Current	\$19.45
1876102370	Fan Belt – FR*/FS*/FT*/FV* with 6HK1 Engine MY2008-Current	\$21.10
5876102640	Fan Belt – NN*/NP*/NQ* with 4HK1 Engine MY2008-Current	\$16.35
1876102390	Fan Belt – FR*/FS* with 4HK1 Engine MY2008-Current	\$16.35
5876102610	Fan Belt – NP*/NQ* with 4HK1 MY2003-2007	\$34.30
5876102630	Fan Belt – NL*/NM*/NN*/NP*/NQ* with 4HK1/4JJ1 Engines MY2008-Current (80A Alternator)	\$16.35
5876102620	Fan Belt – NL*/NM*/NN*/NP*/NQ* with 4HK1/4JJ1 Engines MY2008-Current (50A Alternator)	\$16.35
1876101870	A/C Belt – FX*/GX* with 6UZ1 Engine MY2008-2012	\$11.55
1876101880	A/C Belt – FR*/FS*/FT*/FV* with 6HK1 Engine MY2008-Current	\$11.30
1876102400	A/C Belt – FR*/FS*/FT*/FV* with 4HK1 Engine MY2008-Current	\$13.60
5876102360	A/C Belt – NL*/NM*/NN*/NP*/NQ* with 4HK1/4JJ1 Engines MY2008-Current	\$17.10



AIR CLEANER ELEMENTS

1876100581	Outer Element – FR*/FS*/FT with 6HE1/6HK1 Engines MY2000-2007	\$115.70
1876101510	Inner Element – FR*/FS*/FT with 6HE1/6HK1 Engines MY2000-2007	\$51.40
1876101170	Outer Element – FR*/FS*/FT with 6HH1 Engine MY2000-2007	\$68.50
1876101181	Inner Element – FR*/FS*/FT with 6HH1 Engine MY2000-2007	\$48.50
1876101132	Outer Element – FR*/FS*/FT*/FV* with 6HK1(260HP)/4HK1 Engines MY2008-Current	\$113.30
1876101141	Inner Element – FR*/FS*/FT*/FV* with 6HK1(260HP)/4HK1 Engines MY2008-Current	\$56.70
5876102500	Primary Element – NL*/NM*/NN*/NP*/NQ* with 4HK1/4JJ1 Engines MY2008-Current	\$50.20



Merchandise



92958875
ISUZU N-SERIES
TOY TRUCK
(NOT FOR CHILDREN UNDER 3 YEARS)
\$34.35



92958816-818
BASEBALL CAP
(RED, BLACK OR CHARCOAL - ONE
SIZE FITS MOST)
\$28.50



92958099
BADGE CAP
\$14.40



92958676
LEGIONNAIRE CAP
(NAVY BLUE - ONE SIZE FITS MOST)
\$21.65



92958457
WIDE BRIM HAT
(BLACK - ONE SIZE FITS MOST)
\$22.80



92957659
COFFEE MUG
(BLACK - 480ML)
\$13.50



92958137
THERMO DRINK BOTTLE
(RED - 500ML)
\$13.60



92958676
SUMMER PACK
(INCLUDES WATER BOTTLE, COOLER
BAG & HAT)
\$67.60



92958891
DELUXE COOLER BAG
(BLACK)
\$57.60



92958677
COLLAPSIBLE
COOLER BAG
(BLACK)
\$61.65



92958768
MUDFLAP-STYLE
BAR COASTERS
(SET OF 6)
\$30.20



92958176
BLUETOOTH SPEAKER
\$23.10



92958538
WIRELESS
PHONE CHARGER
\$10.60



92958481
MULTI-PURPOSE TOOL
\$38.90



92955855-860
SHORT SLEEVE
WORK SHIRT
(NAVY BLUE - VARIOUS SIZES)
\$55.50



92958493-504
MENS & WOMENS
ASTON POLO SHIRT
(BLACK - VARIOUS SIZES)
\$58.15

Isuzu Trucks Dealer Network

Isuzu has the largest truck dealer network in the country, with all 74 locations providing the highest quality Genuine Parts, backed by industry-leading support and warranty. This all means reduced downtime for our customers, freeing them up to focus on the important stuff. And when the parts are fitted by an authorised Isuzu technician, you'll be helping extend the working life of your truck and getting peace-of-mind that money just can't buy. Because reliability is everything!



Dealer/Branch



Authorised Service & Parts Outlet



Scan the QR Code
to find your nearest
Isuzu Trucks dealer.